

DRAWING NUMBER
51/5

51/5

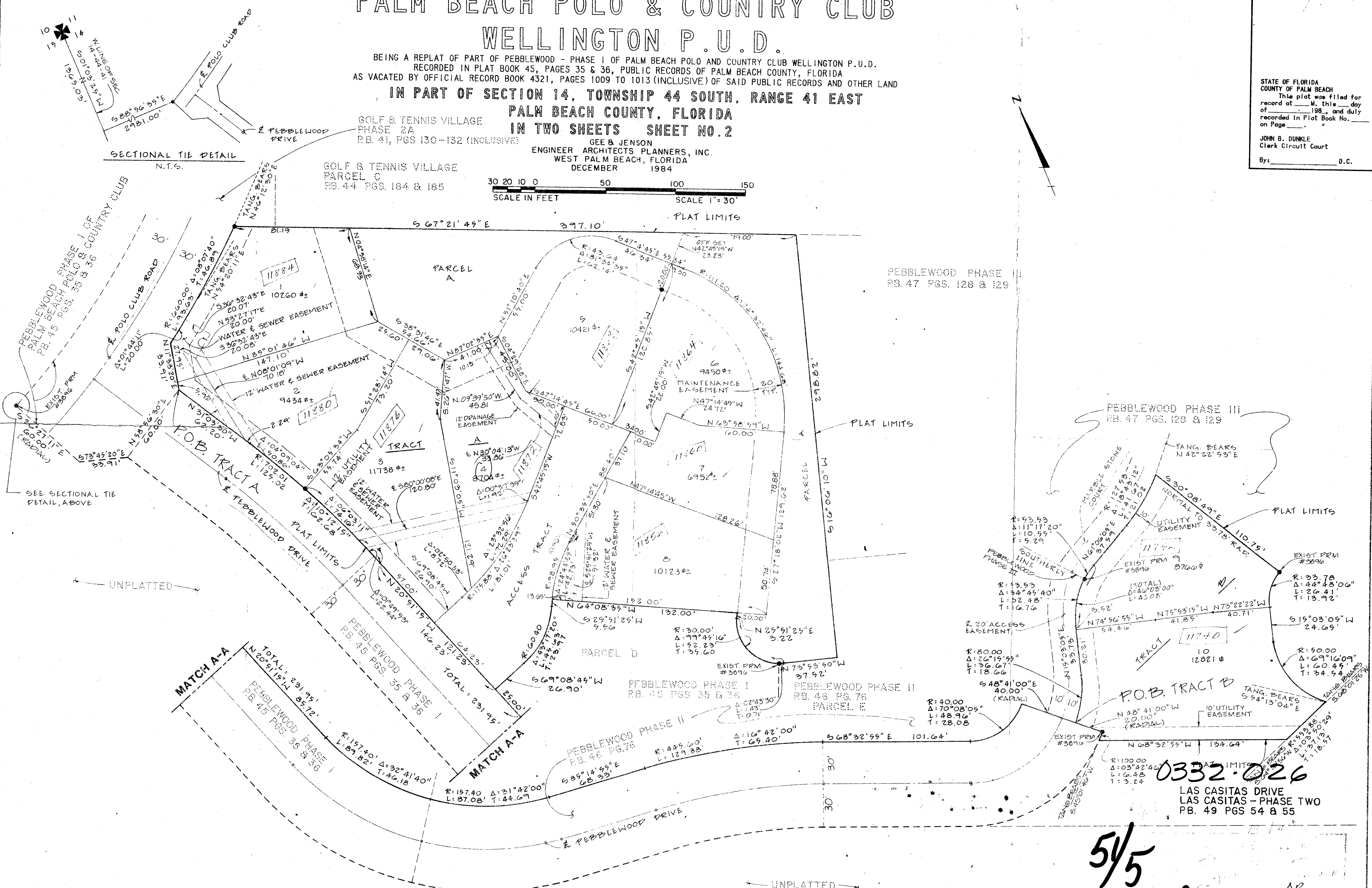
PEBBLEWOOD - PHASE IV PALM BEACH POLO & COUNTRY CLUB WELLINGTON P.U.D.

BEING A REPLAT OF PART OF PEBBLEWOOD - PHASE I OF PALM BEACH POLO AND COUNTRY CLUB WELLINGTON P.U.D.
RECORDED IN PLAT BOOK 45, PAGES 35 & 36, PUBLIC RECORDS OF PALM BEACH COUNTY, FLORIDA
AS VACATED BY OFFICIAL RECORD BOOK 4321, PAGES 1009 TO 1013 (INCLUSIVE) OF SAID PUBLIC RECORDS AND OTHER LAND
IN PART OF SECTION 14, TOWNSHIP 44 SOUTH, RANGE 41 EAST
PALM BEACH COUNTY, FLORIDA
IN TWO SHEETS SHEET NO. 2

GEE & JENSON
ENGINEER ARCHITECTS PLANNERS, INC.
WEST PALM BEACH, FLORIDA
DECEMBER 1984

STATE OF FLORIDA
COUNTY OF PALM BEACH
This plat was filed for
record at _____ M. this _____ day
of _____ 198____, and duly
recorded in Plat Book No. _____
on Page _____
JOHN B. DUNKLE
Clerk Circuit Court
By: _____ D.C.

SCALE IN FEET
30 20 10 0 50 100 150
SCALE 1"=30'



DRAWING NUMBER 1

DRAWING NUMBER

DRAWING NUMBER

JOB NO. 84-686

51/5
PEBBLEWOOD Ph IV P.B. Polo+C.C.

0332-026

LAS CASITAS DRIVE
LAS CASITAS - PHASE TWO
PB. 49 PGS 54 & 55